

Linde glass tools: Glass expert database

Linde glass tools is an MS Access 97 database application and was conceived as a file/server application for use in the glass industry and glass production/glass melting.

Linde glass tools is an information system and also serves to optimise and rationalise work procedures.

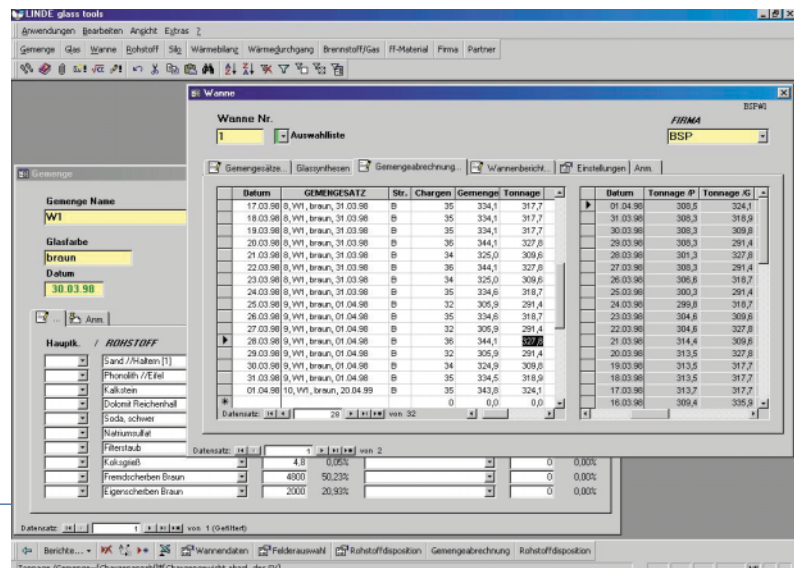
Linde glass tools is a complex modular data collection system for administering, archiving and evaluating:

Standard:

- ▶ Companies and individuals
- ▶ Raw materials
- ▶ Batch and glass compositions
- ▶ Glass melting furnaces, silos and operating data
- ▶ ff materials (ff catalogue) and procedures
- ▶ Fuels
- ▶ Thermal and material balances

Main uses:

- ▶ Comprehensive reports for documentation
- ▶ Over 130 typical raw material compositions with various characteristics
- ▶ Over 110 typical glass compositions of different glasses and average analyses of European container glasses
- ▶ Over 20 typical fuel compositions for gases and oils
- ▶ Various air and O₂ compositions
- ▶ Batch calculation (calculation of the glass syntheses)
- ▶ Calculation of the glass properties – over 30 different calculation models
- ▶ Mixture billing
- ▶ Raw material arrangement
- ▶ Glass set calculation (calculation of the batch)
- ▶ REDOX calculations
- ▶ Oxide balance
- ▶ Raw materials inventory and ordering
- ▶ Calculation of heat transitions
- ▶ Combustion calculation
- ▶ Calculation of thermal balances
- ▶ Collection of formulae
- ▶ Online Help
- ▶ Small glass revision book



Glas

Glas Name: WI
Auswähllisten: 1 2 3 4
Id-Nr: 10
Freigabe:

Glasfarbe: WANNE
Brom: BSP#1
Datum: 20.04.99
Firma: BSP

Analysenummer: 100.00

Kosten: 56,62 DM
Redox-Zahl: -21,1
Carbon-Number: -71,9
Glasfarbe: braun
CSB-Wert: 328,8
cooling time: 97,7
Sauerstoffaktivität: 0,044

Glass datasheet

Gleiseigenschaften

Vakozitat: V: Kennzahlen: V: Kostentenden:

T (°C) bei log(t):	1.	2.	3.	4.	5.
	2	3	4	7,65	13
Lakatos (VFT)	1450	1201	1038	737	565
Sasek u. M.	1478	1212	1048	742	545
Ledererova u. M.	1502	1244	1071	744	551
Braginskii (Okhotin)	1368	1104	1037	729	563
R. Cuartas	1442	1131	1027	729	559
Braginskii	1184	1001	993	763	566
Herbert (VFT)	1685	1329	1111	733	531

	Winkelmann u. Schott	Sharp u. Gintler u. Moore	Schwiete u. Ziegler	Rüchert
Temperaturbereich	20..100	0..1300	0..1300	0..900
cpm	0,202	0,278		
cpw		0,319	0,326	0,302
dh		277,6	474,3	
Temp. T			100	

Glass properties datasheet

Advantages:

“In addition to greatly simplifying work, the use of Linde glass tools has resulted in less variation of the individual glass components and therefore homogeneous melting conditions and an improvement in glass quality.”

This is the result of the different locations of Linde glass tools, particularly in the case of the company BSN Glaspack GmbH, Werk Düsseldorf (previously Glashütte Gerresheim GmbH), where Linde glass tools has been in use now for over 24 months.

This success is attributable to the wide-ranging, up-to-date information that can be called up at any time about all raw material, mixture, glass and trough parameters, as well as to the continuous updating of the raw material data and raw material analyses.

System requirements and characteristics:

- IBM-compatible PC, min. Pentium 90
- Main memory: min. 32 MB
- Operating systems supported: Windows 95/98/2000 and Windows NT 3.51 or higher
- MS Access 97 (RUN-TIME MODULE on request)
- Interfaces: ASCII and all MS Office 97 programs
- Network capability: front / back end (file / server)
- Copy protection: dongle
- Access protection: own user administration
- Language versions: German, English and French (other language versions in preparation)

Wärmebilanz

Bezeichnung: 70 m²
Datum: 05.07.99
Ofenart: EP
WANNE

BRENNSTOFF

Gas	Gasanteil	Kosten	Hu
O ₂	Brennstoff	0,00 GE/Na ³	8534
Strom	Heizöl 5	0,00 GE/kg	9992
		0,00 GE/kWh	

Luft/O₂-Träger

Hauptfeuerung: Luft, heuchl 20/90
Lambda: 0,00 GE/Na³ 1,08

Falschluft: Luft, heuchl 20/90

Heat balance datasheet



Linde Gas AG
Seitnerstraße 70
D-82049 Hoellriegelskreuth
Phone +49 89 7446-0, Fax +49 89 7446-1230
<http://www.linde.com/linde-gas>

Further publications on our complete range of products are available in our sales offices.

Please consult our experts for advice.